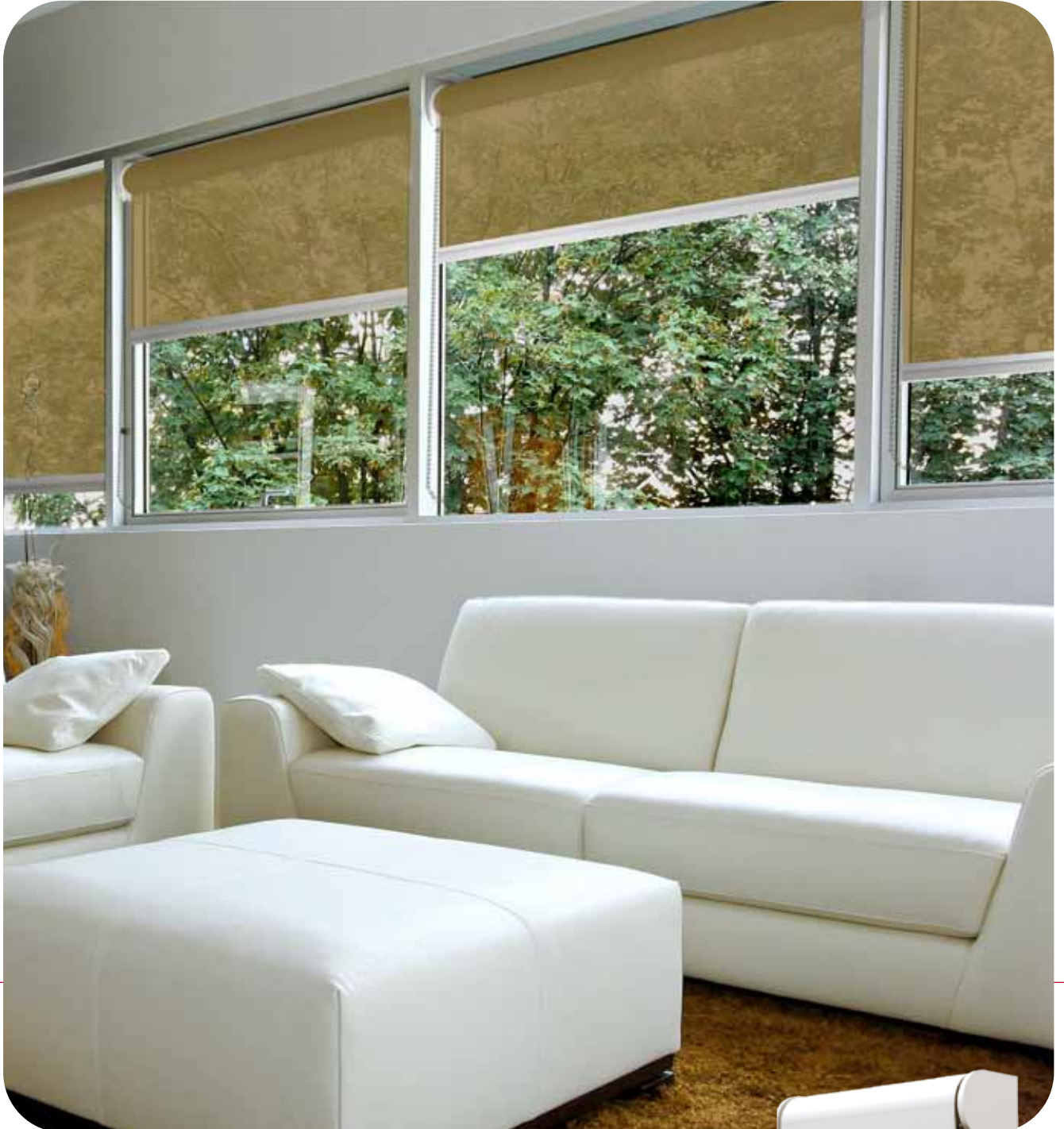


screen 5%



nevaluz®  
collections

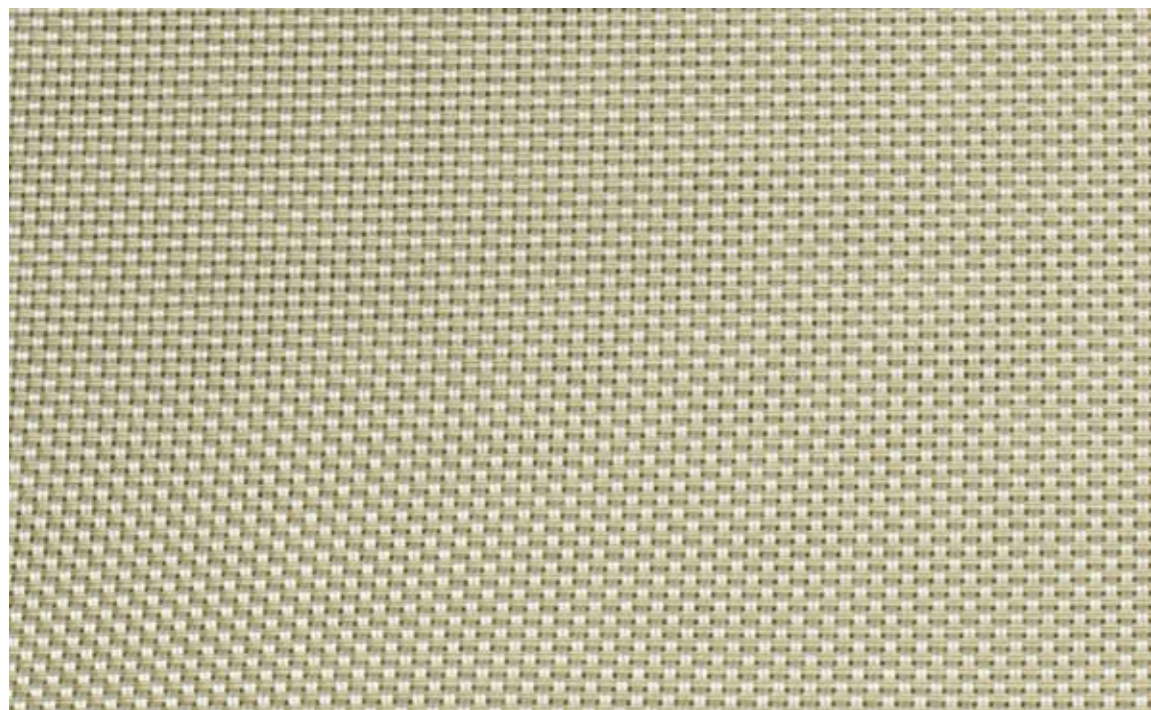
| **aluscreen**



estor**enrollable**  
*rollerblinds*



120



200



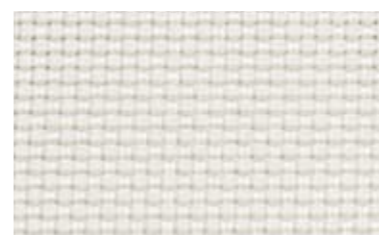
202




867





900




## Datos técnicos *Technical info*

 Peso 635 g/m<sup>2</sup> ± 5 %  
Weight 635 g/m<sup>2</sup> ± 5 %


 25 % Polyester  
75 % PVC

 UV-B Factor 90 %  
UV-A Factor 96,51 %

 Resistente al fuego  
Fire resistance  
NFPA701(USA)

 Anchos 250 cm  
Widths 250 cm

 Factor de Apertura 5 %  
Openess Factor 5 %

 NO termosoldable con  
cinta refuerzo o costura  
NO thermo welding with  
reinforcement tape or seam

 Medio Ambiente: OEKO-TEX 100  
Environment: OEKO-TEX 100

 Espesor 0,93 mm ± 5 %  
Thickness 0,93 mm ± 5 %

 Resistencia del color: mín. 4 años  
Colour fastness: minimum 4 years

estore**enrollable**  
roller**blinds**



**nevaluz**<sup>®</sup>  
collections

**aluscreen**

**aluscreen** es un producto **nevaluz**<sup>®</sup>  
*aluscreen is a product of nevaluz*<sup>®</sup>



**nevaluz**<sup>®</sup>

[www.nevaluz.com](http://www.nevaluz.com)

### Sevilla

Polig. Ind. Maza y Marín,  
nave 16. 41400 Écija (Sevilla)

**Tlf. 955 90 53 30 / 90**

**Fax. 955 90 31 11**

[info@nevaluz.com](mailto:info@nevaluz.com)



### Valencia

Travesía del Bovalar, 70  
Pol. Ind. El Bovalar.

46970 Alaquàs (Valencia)

**Tlf. 902 808 251**

**Fax. 902 808 252**

[nevaluzvalencia@nevaluz.com](mailto:nevaluzvalencia@nevaluz.com)

### México

Avenida Araucarias lote  
28 manzana XVIII, entre  
Av. Las Torres y Araucarias  
en la Ciudad Industrial  
Bruno Pagliai en Tejeria,  
Veracruz 91697 (México)

**Tlf. 01 (229) 981 18 80**

**Fax: 01 (229) 981 18 86**

[nevaluzmexico@nevaluz.com](mailto:nevaluzmexico@nevaluz.com)

### Perú

Centro Logístico Portada  
de Lurín, Almacén F-18.  
Autopista Panamericana Sur, km 38.  
Punta Hermosa, Lima (Perú)

**Tlf. 00 (511) 634 67 00**

**Tlf. 00 (511) 634 67 01**

[nevaluz@nevaluz.com.pe](mailto:nevaluz@nevaluz.com.pe)

